

# Company Profile

**NAVI PROFESSIONAL CONSULTING (PTY) LTD**  
**REG NO: 2012/038466/07**



## Background

Navi Professional Consulting Pty Ltd, is a 100% Black owned company, which was formed in 2012. The company is proudly South African and is motivated by its intention to provide high quality service and excellence.

Navi Professional Consulting Pty Ltd, is led by experienced and hands on civil engineering professionals with a wide range of skills in the built environment. Our Director has previously managed numerous civil engineering projects, gaining extensive experience in this industry. The company prides itself for employing only the best technical resources from the built environment industry to provide the best possible service for our clients. Our staff are our most important assets. We recognise that our clients procure our services because they have confidence in us. We know that the only way to meet their needs is by delivering good quality products and services.

## Professional Affiliation

Our key members are professionally registered with the Engineering Council of South Africa (ECSA) and has membership with the South African Institution of Civil Engineers (SAICE).

## Professional Associations

The company has developed professional associations with a number of progressive professional engineering companies in the built environment with different disciplines and complimentary experiences to form relationship that allow Navi Professional Consulting Pty Ltd to provide comprehensive professional services.

The company provides a broad spectrum of professional engineering services which include the following:

- Structural design and engineering
- Computerized structural analysis
- Reinforced, pre-stressed and composite structure design
- Earthwork, excavation and grading design
- Environmental and geotechnical studies
- Design coordination with electrical and mechanical disciplines
- Road Traffic & Transportation.

## Company Vision

The company strives to establish itself as the preferred service provider for the provision of consulting services in Project Management, engineering services, as well as general civil engineering infrastructure services. A close relationship with likeminded companies and specialist individual consultants permits Navi Professional Consulting Pty Ltd to form project specific teams to allow the firm to provide a “one stop shop” to our valued clients.

## Company Mission

The company’s mission is to provide sustainable and appropriate technical solutions with a positive social and environmental impact, thus ensuring value for all stakeholders.

## Goals and Objectives

- We intend to establish ourselves as an enterprise known for quality of service we provide.
- We intend to establish ourselves as a profitable company.
- We intend to grow the company in real terms in order to stay in the market.
- The company considers job creation a very important aspect and we intend to create jobs and empower the disadvantaged communities.
- To respond to our client better than our competitors.

Navi Professional Consulting Pty Ltd is committed to the ideals of environmental stewardship and sustainable building design. We are continuously striving to provide innovative technology-based engineering solutions that are energy-efficient, cost effective and sustainable.

## Company Culture

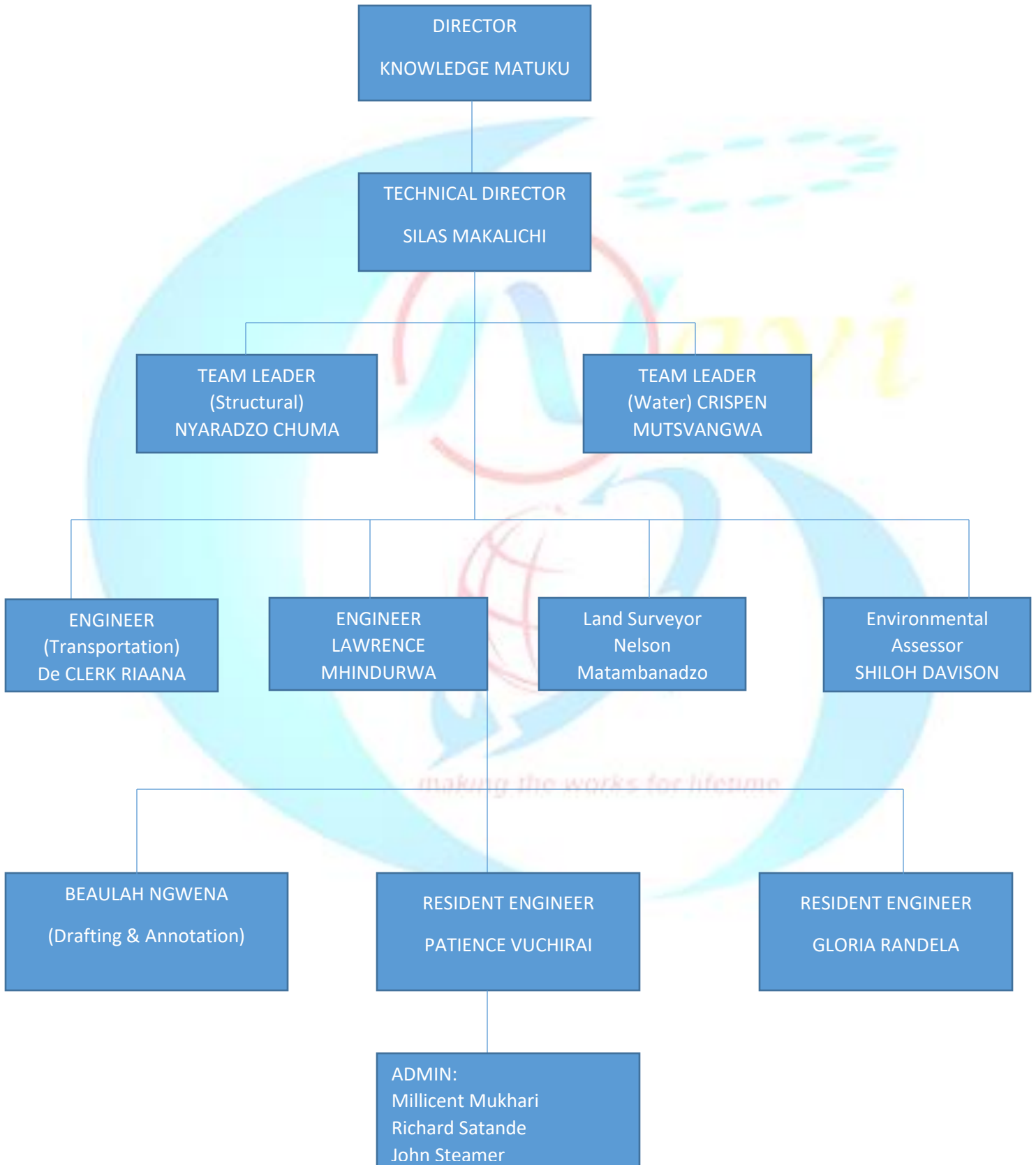
The company is an equal opportunity employer, committed to the development of historically disadvantaged persons to the highest level, in terms of professional training and equity in the company. The company is staffed and equipped with the latest technology and know-how to enable it to provide competitive and cost effective professional engineering services to meet the diversified requirement of its clients whilst maintaining high ethical and professional standards.

## Technical Resources

Personnel	Qualifications	Years Exp.	Gender	Key Experience
K Matuku	BSc Civil Eng ECSA	23+	Male	Road and Bridge Design
Lawrence Mhindurwa	BSc Civil Eng ECSA	21+	Male	Structural Design
WAL De Klerk	BSc Civil Eng ECSA	15+	Female	Road Design
N. Chuma	BSc Civil Eng ECSA	10+	Female	Sewer and Structural
Silas Makalichi	BSc Civil Eng SABTACO	6+	Male	Water and Sanitation
Patience Vuchirai	BSc Civil Eng	2+	Female	Contracts Administration
Crispen Mutsvangwa	BSc Civil Eng	20+	Male	Water and Sanitation
Avhasei G Randela	ND Civil Eng	10+	Female	Roads
Beulah Ngwena	NC Draughting	20+	Female	Draughting
Nelson Matambanadzo	ND Surveying	8+	Male	Land Surveying

NB: Other resources from associated companies can be availed on a need basis.

### Company Organogram



## Projects

### Schedule of recent projects

Client	Project	Appointment Value	Project Type	Status
Munei Consulting	Car Park and Driveway	R13,526,270.00	Road	Completed
Munei Consulting	Rehabilitation of Road (Bok St)	R16,111,258.00	Road	Completed
Department of Health	Refurbishment of Clinics	R25,154,198.00	Building	Completed
The Mvula Trust	Drilling of Boreholes in schools	R23,810,580.00	Water	Completed
The Mvula Trust	Sanitation Infrastructure	R24,916,652.99	Sanitation	Completed
KG Sharp Labs	Laboratory Construction	R21,569,911.06	Building	Completed
20Twenty Hi-Tech Solutions	Construction of Offices	R24,020,190.00	Building	Completed
Marula Platinum Mine	Construction of 4,6 km reticulation in Madikane Village	R4,500 000.00	Water	Pending Completion
Marula Platinum Mine	Construction of 8km reticulation in Ga-Kgoete Village	R12,000 000.00	Water	Pending Completion
Marula Platinum Mine	Construction of 6km reticulation in Ga-Kgoete Village	R7,000 000.00	Water	Pending Completion
SMV Civil	Design of Mutale	R18,451 292.00	Road	Completed

<b>Engineers Pty Ptd</b>	<b>Extension 1 Ring Road</b>			
<b>Nandzu Trade and General Projects</b>	<b>Project Management of 8km Construction of Mpagoni mainline</b>	<b>R8,900 000.00</b>	<b>Water</b>	<b>Pending Completion</b>
<b>Munei Consulting</b>	<b>Design of 4,6km gravel to tarred road (Mpileng Village)</b>	<b>R14,800 000.00</b>	<b>Road</b>	<b>Completed</b>

#### WATER & SANITATION PROJECTS:

<b>NO.</b>	<b>PROJECT</b>	<b>DISTRICT</b>	<b>W/S</b>	<b>VALUE</b>
1	Manoshi Secondary School	Capricorn	Sanitation	R1 050000,00
2	Maisha High School	Capricorn	Sanitation	R850 000,00
3	Modisha Primary School	Waterberg	Sanitation	R620 157,59
4	Ngwanamago Primary School	Capricorn	Sanitation	R1 250000,00
5	Feke Primary School	Capricorn	Sanitation	R325 130,00
6	Ketlani Lower Primary School	Vhembe	Sanitation	R1 397279,00
7	Mathlari Secondary School	Mopani	Sanitation	R1 593340,00
8	Montsheng Primary School	Mopani	Sanitation	R285 190,00
9	Ngwanamakhutswe Secondary School	Mopani	Sanitation	R1 010070,48
10	Ramatau Secondary School	Mopani	Water	R285 190,00
11	Seagotle Secondary School	Mopani	Water	R285 190,00
12	Thapola-A-Nkona Primary School	Mopani	Sanitation	R1 148886,61

13	Tjatjaneng Primary School	Capricorn	Water	R285 190,00
14	Tjetje Technical High School	Sekhukhune	Sanitation	R1 593340,59
15	Mokgapaneng Primary School	Capricorn	Sanitation	R465 998,80
16	Dikobe Molaba Secondary School	Capricorn	Sanitation	R1 058194,76
17	Thabakhubedu Primary School	Sekhukhune	Sanitation	R1 397279,20
18	Ekucathuleni Primary School	Sekhukhune	Sanitation	R1 201217,83
19	Sereme Combined School	Sekhukhune	Sanitation	R1 857960,90
20	Phooko Primary School	Sekhukhune	Sanitation	R1 078980,45
21	Mothibedi Combined School	Sekhukhune	Sanitation	R732 919,08
22	Mapudithomo Primary School	Capricorn	Sanitation	R325 130,00
23	Madipoane Secondary School	Capricorn	Sanitation	R325 130,00
24	Marc Semeka Secondary School	Capricorn	Sanitation	R1 397279,20
25	Mmaphai Primary School	Mopani	Sanitation	R1 593340,00
26	Pheerehla Maake Secondary School	Mopani	Sanitation	R1 857960,90
27	Phepeni Lower and Higher Primary School	Mopani	Sanitation	R1 201217,83
28	Yhigugulethu Primary School	Sekhukhune	Sanitation	R1 299594,08
29	Moime Primary School	Mopani	Sanitation	R610 000,25
30	Nghalalume Primary School	Mopani	Sanitation	R1 055969,00
31	Matshumu Primary School	Capricorn	Sanitation	R1,579,764.70
32	My Darling Senior Secondary School	Capricorn	Sanitation	R1,002,565.67
33	Kgolane Secondary School	Sekhukhune	Sanitation	R 898, 442.34
34	Seale Secondary School	Capricorn	Sanitation	R865, 784.34

35	Itshomeleng Primary School	Capricorn	Sanitation	R1,466,574.69
36	Modiadie Secondary School	Sekhukhune	Sanitation	R735, 302.26
37	Mmamolope Senior Secondary School	Capricorn	Sanitation	R755, 623.43
38	Asiphumelele Special School	Sekhukhune	Sanitation	R722, 252.08
39	Matuma Secondary School	Capricorn	Sanitation	R436, 714.35
40	Lebelo Primary School	Sekhukhune	Sanitation	R341, 641.76
41	Rapetswa Primary School	Capricorn	Sanitation	R 432, 924.98
42	Makgalanoto Primary School	Capricorn	Sanitation	R1,917,344.94
43	Mankgaile Primary School	Capricorn	Sanitation	R2,726,126.93
44	Sefotwane Primary School	Capricorn	Sanitation	R1,160,514.24
45	Matianyane Primary School	Sekhukhune	Sanitation	R1,357,207.78
46	Ramanare Magampa Secondary	Sekhukhune	Sanitation	R1,919,339.81
47	Ramatshagalala Secondary School	Sekhukhune	Sanitation	R1,832,754.01
48	Morarela Primary School	Sekhukhune	Sanitation	R1,856,964.70
49	Ramokgopa Primary School	Capricorn	Sanitation	R1,296,733.43
50	Manoshi Secondary School	Capricorn	Water	R325 190,00
51	Maisha High School	Capricorn	Water	R325 130,00
52	Tshamani Primary School	Vhembe	Water	R285 230,00
53	Mheho Primary School	Vhembe	Water	R285 230,00
54	Tshamiseka Priimary School	Vhembe	Water	R285 230,00
55	Hasani Lawrence Primary School	Vhembe	Water	R325 130,00
56	Humula Secondary School	Vhembe	Water	R285 230,00



57	Ngwanamago Primary School	Capricorn	Water	R325 130,00
58	Feke Primary School	Capricorn	Water	R325 130,00
59	Khatisa Secondary School	Vhembe	Water	R325 130,00
60	Montsheng Primary School	Mopani	Sanitation	R1 669 516,00
61	Ramatau Secondary School	Mopani	Sanitation	R1 669 516,00
62	Seagotle Secondary School	Mopani	Sanitation	R1 934 136,91
63	Thapola-A-Nkona Primary School	Mopani	Water	R285 190,00
64	Tjatjaneng Primary School	Capricorn	Sanitation	R1 593 340,57
65	Mapudithomo Primary School	Capricorn	Sanitation	R1 397 279,20
66	Madipoane Secondary School	Capricorn	Sanitation	R1 201 217,83
67	Muongadi Primary School	Vhembe	Water	R285 190,00
68	Nghalalume Primary School	Mopani	Water	R285 190,00

### Reverse Osmosis Projects

	School Name	District Municipality	W/S	AMOUNT
1	Dzimauli Secondary School	Vhembe	R/O	R193 263.00
2	Vhutavatsindi Secondary School	Vhembe	R/O	R193 263.00
3	Phala Secondary School	Capricorn	R/O	R193 263.00
4	Witling Lower Primary School	Capricorn	R/O	R193 263.00
5	Dibeng Primary School	Capricorn	R/O	R193 263.00
6	Lukwarani Primary School	Vhembe	R/O	R193 263.00
7	Mmashesha Primary School	Capricorn	R/O	R193 263.00
8	Mochedi High School	Capricorn	R/O	R193 263.00

9	Moriting Primary School	Capricorn	R/O	R193 263.00
10	Ramothlale Primary School	Capricorn	R/O	R193 263.00
11	Sekate Senior Secondary School	Capricorn	R/O	R193 263.00
12	Lesailane Secondary School	Sekhukhune	R/O	R193 263.00
13	Mafolo Primary School	Sekhukhune	R/O	R193 263.00
14	Bogwasha Circuit	Sekhukhune	R/O	R193 263.00
15	Mathung Primary School	Sekhukhune	R/O	R193 263.00
16	Legare Secondary School	Sekhukhune	R/O	R193 263.00
17	Kopa Secondary School	Sekhukhune	R/O	R193 263.00
18	Pirwana Sec School	Waterberg	R/O	R193 263.00
19	Mmushi Primary School	Capricorn	R/O	R193 263.00
20	Shakung Sec School	Sekhukhune	R/O	R193 263.00
21	Manku Sec School	Sekhukhune	R/O	R193 263.00
22	Seloutjo Primary School	Capricorn	R/O	R193 263.00
23	Mamotshana Primary School	Capricorn	R/O	R193 263.00
24	Gwara Gwara Combined School	Sekhukhune	R/O	R193 263.00
25	Mudimeli	Capricorn	R/O	R193 263.00
26	Mukovhawavhale Primary School		R/O	R193 263.00
27	Tshukuyuy Primary		R/O	R193 263.00
28	Mabotha Secondary School	Capricorn	R/O	R193 263.00
29	Itsoseng Primary School	Sekhukhune	R/O	R193 263.00
30	Semorir Secondary School	Sekhukhune	R/O	R193 263.00
31	Makeke Primary School	Sekhukhune	R/O	R193 263.00
32	Ngwenani Primary School	Vhembe	R/O	R193 263.00
33	Humbelani Secondary School	Vhembe	R/O	R193 263.00
34	Valdezia Primary School	Vhembe	R/O	R193 263.00

35	Lutandale Primary School	Vhembe	R/O	R193 263.00
36	Muthurwana Secondary School	Vhembe	R/O	R193 263.00
37	Tshinavhe Secondary School	Vhembe	R/O	R193 263.00
38	Dikgalaopeng		R/O	R193 263.00
39	Tshividzo Masiagwala Secondary	Vhembe	R/O	R193 263.00
40	Ngwanamashile S School		R/O	R193 263.00

## Health & Safety

1. It is the policy of Navi Proficient Engineering Pty Ltd to ensure so far as reasonably practicable, the health, safety and welfare of its employees at work.
2. The Company and its employees are to comply, as far as reasonably practicable, with the requirements of the Health and Safety Act and with all its statutory provisions. All employees are required to assist in achieving this aim.
3. Overall and primary responsibility for maintaining a safe and healthy working environment within Proficient Engineering CC, lies with the Company owner. The onus of overall and primary responsibility does not absolve individuals from their specific responsibilities under the Health and Safety Act.
4. Each and every employee is required, by the Health and Safety at Work Act, while at work: To take reasonable care for the health and safety of themselves and of other persons who may be affected by their acts or omissions at work. To co-operate with their Line Manager, or any other person, so far as is necessary, to enable them to comply with any health and safety duty, or requirement placed upon them. To avoid intentionally or recklessly interfering with, or misusing anything provided in the interests of health, safety or welfare.
5. Where applicable, disciplinary action will be taken where breaches of regulations and/or willful disregard of safety practices or procedures occur.
6. Training for these individuals, and other staff, will be provided by the Company as required.
7. All contractors or consultants working for Navi Professional Consulting Pty Ltd will be required to comply with the Health and Safety Policy.



**Contact Us:**

**PHYSICAL ADDRESS:**

**TECHNICAL OFFICE:**

**23A CHURCH STREET**

**POLOKWANE**

**0699**

**MAIN OFFICE:**

**10 Paramount Street**

**Polokwane**

**0699**

**POSTAL ADDRESS**

**SUIT 151**

**P.BAG 9700**

**POLOKWANE**

**0699**

**TEL: 015 291 1756/1779**

**FAX: 086 602 3645**

**CELL: 078 9065 766/0749597 010**

**EMAIL: [admin@naviprofessional.co.za](mailto:admin@naviprofessional.co.za)**

**WEBSITE: [www.naviprofessional.co.za](http://www.naviprofessional.co.za)**

